

# KINGSLEY ALICHE

SAIRAANHOTTAJA 2024

## 1.STRENGTHS

- Demonstration of composure and effectiveness in high-pressure and chaotic situations, ensuring patient care and safety remain priorities.
- Possesses strong teamwork skills, excelling in diverse team environments and contributing effectively to collaborative efforts.
- Exhibits patience and a proactive attitude toward acquiring new knowledge and skills in clinical and professional settings.
- Committed to continuous growth and development, both professionally and personally, to enhance performance in work and daily life.



## 2.PREVIOUS STUDIES

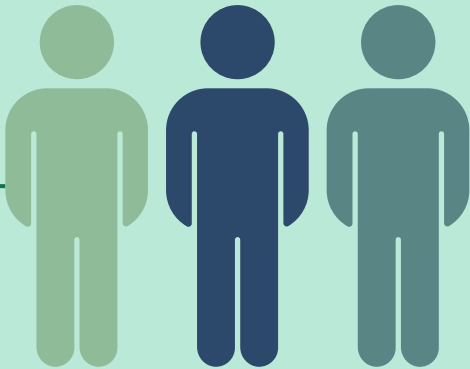
- Bsc Biochemistry
- MSc. General Toxicology and Environmental Health risk Assessment

## 3.ARTICLE

- Role of Nurses in The Treatment of Acne in Both Healthcare Settings And At Home

## 4.NETWORK

- Clinical mentors during my internship.
- Teachers.
- Nurses from different gig wards.
- International council for Nursing students
- Finnish nursing association.



## 5.HOBBIES

RUNING, TENNIS , FOOTBALL  
AND READING

